

K5

K5

Characteristics

- double break switching
- long mechanical life
- high electrical rating
- faston terminals

Rating 250 VAC, 16 A

Dimensions (mm) 41 × 19 × 15.5

Actuator

- plunger
- ramp plunger
- plain lever
- roller lever

Approvals UL, CSA



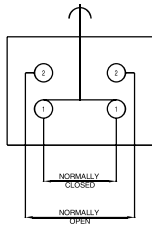
Preferred Range

Ordering Reference	Actuating Force (N) (ozf)		Sealing	Operating pos. (mm) (in)		Terminal	Circuit	Actuator	Contacts	Electrical rating
K5UL	2.8	10.00	IP40	17.4	0.68	Faston	SPDT	Plunger	Ag	Up to 250 VAC, 16 A
K5CUL	2.8	10.00	IP40	16.7	0.66	Faston	SPDT	Ramp plunger	Ag	Up to 250 VAC, 16 A
K5KUL	1.4	5.00	IP40	20.3	0.80	Faston	SPDT	Plain lever	Ag	Up to 250 VAC, 16 A
K5KRUL	1.5	5.40	IP40	32.0	1.26	Faston	SPDT	Roller lever	Ag	Up to 250 VAC, 16 A
K5QUL	2.8	10.00	IP40	17.9	0.71	Faston	SPDT	Spring plunger	Ag	Up to 250 VAC, 16 A

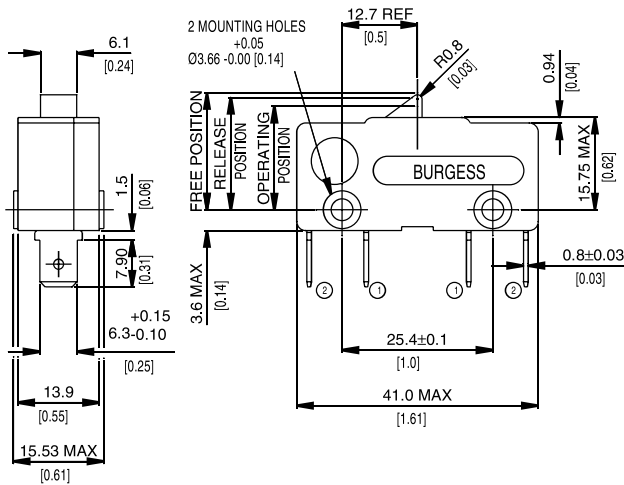
Specifications

Housing	Glass fibre reinforced nylon
Plunger	Nylon
Mechanism	Two circuit double break change-over
Contacts	Silver
Terminals	6.3 mm (0.25 in) faston
Temperature range	-10°C to +85°C
Mechanical life	10 ⁶ cycles minimum (impact free actuation)
Type of protection	IP40 (enclosure)
Mounting	Side mounting
Actuators	Plain lever – stainless steel, roller lever - stainless steel, nylon roller

Circuit diagram



Dimensions



Recommended maximum electrical ratings

Voltage (max)	Load (A)	Horsepower	Approval
250 VAC	16 (0.75 pf)		UL 1054/CSA 22.2 No. 55 - 6,000 operations
125 VAC	16 (0.75 pf)		UL 1054/CSA 22.2 No. 55 - 6,000 operations
250 VAC		¼ HP	UL 1054 6,000 operations
125 VAC		¼ HP	UL 1054 6,000 operations
0 - 15 VDC	15		General rating - 50,000 operations
15 - 30 VDC	10		General rating - 50,000 operations

Values shown are recommended maximum ratings for single circuit switching