

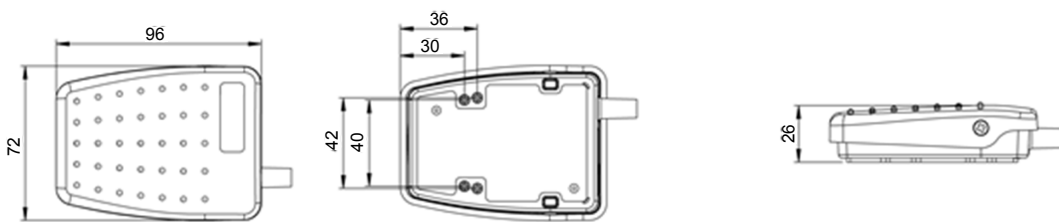
6228 Foot Switches

For IPX7/IPX8 single & double pole switching

- Low profile, rear hinged switch designed for improved user comfort
- All plastic construction with raised tread pattern and anti-slip pad
- Versatile and innovative design make it an ideal product for OEM use
- Switches designed to meet industrial, office and commercial standards
- Variable output option
- Option for customers to fit own cable



Reference dimensions mm



M3 Brass fixing inserts
Bottom holes as standard

General specifications

| | | | |
|-----------------------|--|-----------------------------|--|
| Standards/approvals | n/a | Operating temperature range | -20° C to + 80° C |
| Degree of protection | EN 60529 IPX7 (IPX8 upon request) | Body material | Thermoplastic |
| Connection method | Stripped cable cores or connector of your choice | Weight | 0.14Kg (including cable) |
| Electrical rating | Max. 3A 250V AC/DC | Additional information | Customized versions available (logos, cordsets, colours, guards) |
| Contact configuration | SPST N/O, SPST N/C, SPCO, DPST N/O, DPST N/C, DPCO | | |



For IPX7/IPX8 single & double pole switching

Ordering and options

6228 - - - 0 0 0

Model

Cover & base colours

- | | |
|-----------------------------|-----------------------------|
| A Black cover & Black base | E Red cover & Black base |
| B Grey cover & Black base | L Blue cover & Black base |
| C Yellow cover & Black base | N Orange cover & Black base |
| D Green cover & Black base | |

Base configuration

- A Base fitted with M3 brass inserts
- B Base fitted with Neoprene pad
- C Base fitted with M3 brass inserts & Neoprene pad
- D Base fitted with Anti-slip Feet

Switching action

- A Single pole normally open (SC)
- B Single pole change over (CC)
- C Double pole normally open (DO)
- D Double pole normally open, Two stage (DA)
- G Variable output/Hall effect

Electrical rating

- A Microswitch (Max. rating 0.1A, 24 V AC/DC)
- B Microswitch (Max. rating 3A, 250 V AC/DC)
- D Variable output only (0-5V output)

2-core cable at 2m length

- B Cable 2-core Black
- Z No cable chosen

3-core cable at 2m length (min requirement for variable output)

- B Cable 3-core Black
- Z No cable chosen

4-core cable at 2m length

- B Cable 4-core Black
- Z No cable chosen

Non cable variants - microswitch flying leads only

- A Microswitch change over - fitted with flying leads 450mm long (Max. rating 3A, 250V AC/DC)
- Z No option chosen

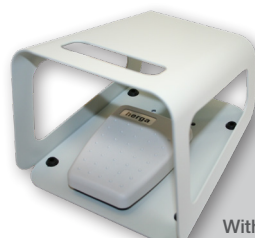
Special attributes

000 indicates no special attribute option chosen (product as standard matrix)
001 through 999 indicates special attributes

Note : Examples: Customer specified cable/cordset with or without plug
Cable length variation if different from 2m
Customer specified identification and label combination
Guard or special base

Accessories

| Part Number | Description |
|-------------|-----------------------------|
| 6202-0001 | Single Black RAL 9005 guard |
| 6202-0002 | Single Grey RAL 7035 guard |
| 6202-0003 | Twin Grey RAL 7035 guard |



With 6202 Guard